

WELCOME TO
FI AND
PRESCHOOL

Bilsthorpe Flying High
Academy



THE TEAM

Teacher and EYFS Lead- Miss Mann



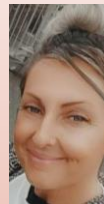
Teaching Assistant - Mrs Boaler



Teaching Assistant - Miss Townsend
(Preschool key worker)



Teacher - Mrs Atkin (Every Monday
morning and every other Monday
afternoon)



A TYPICAL DAY IN FI/PRESCHOOL...

(PRESCHOOL SESSIONS MUCH SHORTER THAN FI'S)



8:45 - 9:05 = Children welcomed into school, self-registration completed independently by the children and then we count together to see how many children are here altogether, days of the week song and complete the calendar (day/season/weather), and finish with our good morning song. - Preschool have a busy box which has a learning focus linked to Development Matters

9:05 - 9:20 = Phonics

9:20 - 10:15 = Continuous provision 'Choosing time' - children to explore the different areas, both indoors and outdoors and lead their own learning, alongside adult interactions. (Group work/one to one reading/interventions)

10:15 - 10:30 = Math's

10:30 - 10:40 = Snack time/story/nursery rhymes

10:40 - 11:20 = Continuous provision 'Choosing time' - children to explore the different areas, both indoors and outdoors and lead their own learning, alongside adult interactions. (Group work/one to one reading/interventions)

11:20 = 11:35 = Literacy/Enquiry

11:35 = 11:45 = Dough Disco/story time

11:50 = Home time/lunch time for 30 hours children

1:00 - 1:10 = Children welcomed into school and we do our good afternoon sound Preschool have a busy box which has a learning focus linked to Development Matters

1:10 - 1:20 = Adult-led session (Physical Development or Communication and language based)

1:20 - 2:30 = Continuous provision 'Choosing time' - children to explore the different areas, both indoors and outdoors and lead their own learning, alongside adult interactions. (Group work/one to one reading/interventions)

2:30 = 2:50 = Exploration down the garden

2:50 - 3:15 = Snack time/story/nursery rhymes

3:20 = Home time

FI AND PRESCHOOL – CURRICULUM

- Every child deserves the best possible start in life. Children develop quickly in the early years, and we understand the importance of harnessing every opportunity to ensure that all children have the secure foundation to reach their full potential. We know that children's experience between birth to five has the greatest impact on their later life chances. For that reason, we are committed to ensuring that our provision provides children with a secure and happy environment in which to grow and flourish.
- We use 'Development Matters' to help plan our curriculum for our children, and use this as an assessment tool.



Prime Areas:

- Communication and Language
- Personal, Social and Emotional Development
- Physical Development

Specific Areas:

- Literacy
- Maths
- Understanding the World
- Expressive Arts and Design

ENQUIRY

- Our curriculum is taught through enquiries, which is a thematic approach, initiated by an enquiry question. each term we work hard to answer a question through a variety of learning opportunities. Our learning environment is carefully planned through the development of a continuous provision. This environment is then developed and enhanced throughout the year to support and challenge children to develop their skills and knowledge progressively in exciting and creative ways.
- We have different subject drivers per term for our enquiry which are:
 - Autumn: History
 - Spring: Geography
 - Summer: Creative Arts

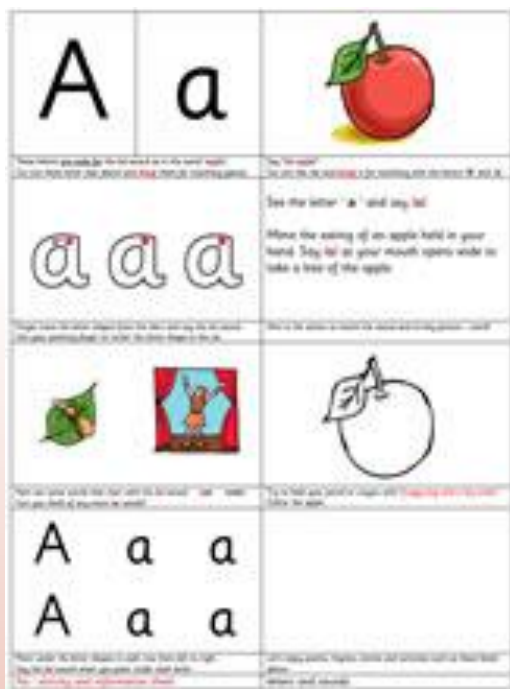
MATHS

- We follow the NCETM maths scheme in Foundation which uses Numberblocks, a pre-school BBC television series aimed at introducing children to early number. The characters combine with engaging storylines to gently introduce concepts of number to support early mathematical understanding.
- The NCETM materials use each episode as a launch pad. They are designed to help children to bring the numbers and ideas to life in the world around them.
- We involve a lot of number nursery rhymes such as 5 little speckled frogs, 5 little monkeys, 5 currant buns, etc.
- We involve a lot of maths in our every day routines, e.g. counting our self-registration in a morning to see how many children are here today, counting at tidy up time, etc.



PHONICS

(SUPER SOUNDS PRE-PHONICS PROGRAMME AND 'TEENY READING SEEDS')



s snake	a apple	t tent	teddy	i insect	p pan
n net	c cat	k kit	duck	-ck	e egg
h hat	r rat	th this thumb	map	m	d dig
g girl	o orange	octopus	umbrella	u	l ladder
-ll	shell	f feathers	-ff cliff	-ss dress	b bat
j jug					

- We follow the 'Super Sounds pre-phonics programme' which involves the aspects: Sound Discrimination - Environmental Sounds/Instrumental Sounds, Body Percussion, Alliteration, Rhyme and Rhythm, Voice Sounds, Oral Segmenting and Blending. These are all to help the development of the children's listening and attention skills and communication and language which are vital for the children to have, to be able to learn letter sounds in phonics.
- In addition to this, we follow the 'Teeny Reading Seeds scheme' which is prequel to the 'No-Nonsense phonics scheme' that is used in F2. Each week we will work our way through the alphabet and learn a new letter sound.

LITERACY

- We link our literacy with our enquiry learning. Every book we look at links to the learning we are doing in enquiry.
- We have a focus story which is learnt over a two or three week period.
- Within our literacy lessons, we will do an awful lot of learning the stories through retelling them in a variety of ways. E.g. using story maps and actions or using props and puppets.
- We will ensure the children have lots of speaking and listening opportunities and opportunities to mark-make.



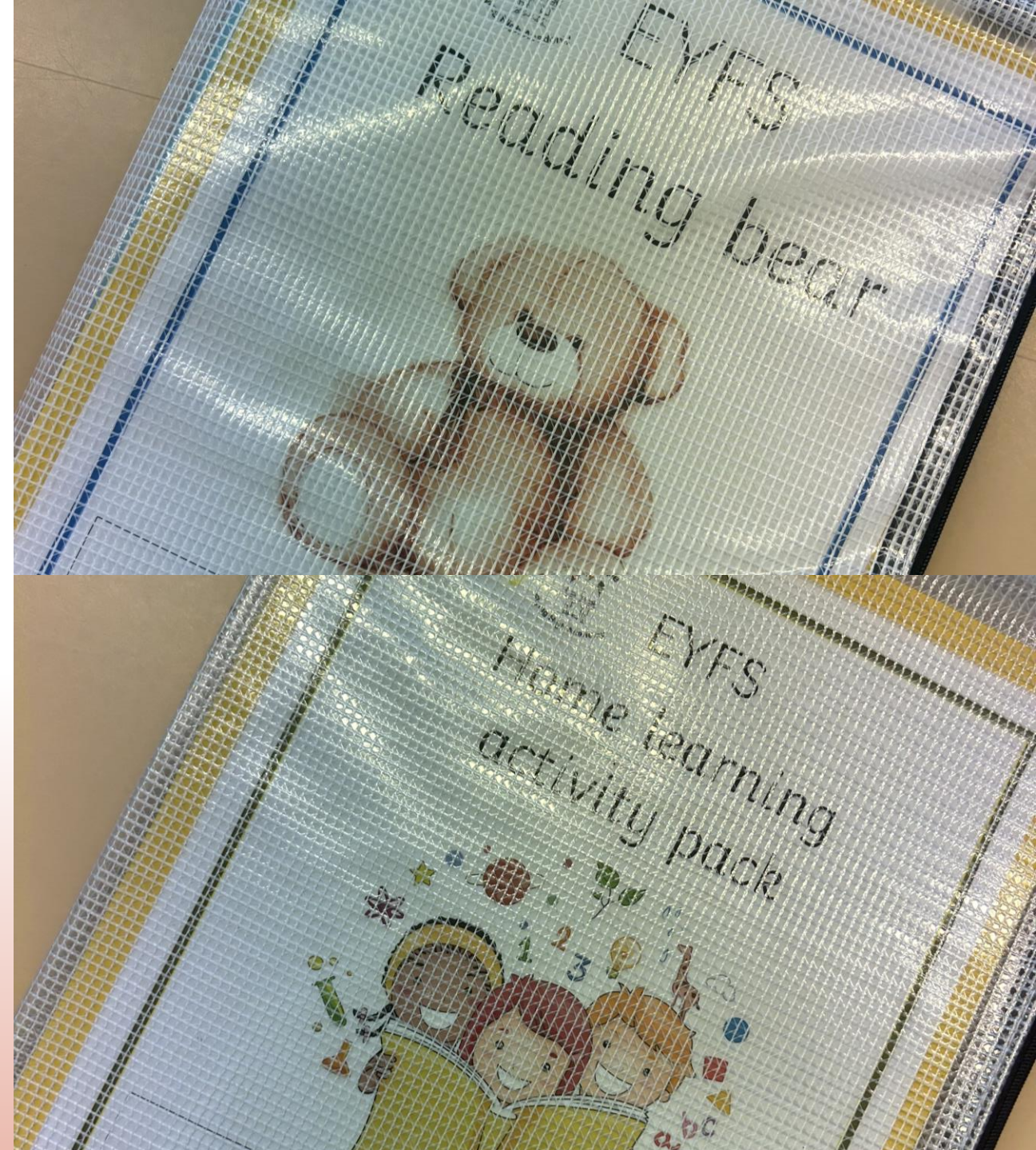
FOREST FRIDAYS

- On Fridays we will have a Forest Friday session.
- During this session the children will be building, digging, using real tools and exploring the outdoor environment and importantly - having lots of fun, building on their friendships and growing in confidence.
- We invite the children to come into school on a Friday morning in clothes you are happy for them to get wet/muddy in or an all in one suit and wellies. They will need to bring their school uniform in with them in a bag, to get changed into after the session. If you are happy for your child's wellies to stay in school all week, pop their name inside them and we can put them onto our welly wall outside.



READING BEAR / HOME LEARNING PACK

- This year in F1 and preschool I will be sending home a reading bear pack containing: two stories, a bear, hot chocolate sachet and a book. This will be given to a chosen child on a Friday and we would like this to be returned on the following Monday. Over the weekend it would be great if you could read one of the chosen stories with your child and write a little note inside the book. Photographs are also welcome (please consider this book will be going home with other children throughout the year). I can print these off if you send me the photographs on dojo and stick these in.
- We will also be sending home a EYFS home learning activity pack to a chosen child on a Friday and this will also need to be returned on the following Monday. This is NOT homework but a nice opportunity for you to work with your child to complete an activity linked with the 7 areas of development. Please write some notes in the book provided if you wish too.

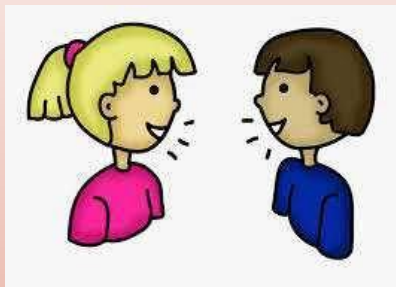


ADDITIONAL INFORMATION



Speech and Language

- In Preschool and Nursery, we will be able to identify any children who we think would benefit from having speech and language therapy. This could be because they need support with their speech sounds and the pronunciation of them, or their use of language and understanding.
- We will speak to you as the child's parent/carer, then fill in a referral form, ask you to sign it and then send it in. There can be quite a long wait on hearing back from SALT and getting an appointment.
- If your child is accepted, and SALT get in touch, it is really important you respond as otherwise they will just close the case immediately and then you would have to ring back up to reopen your child's case.
- Any targets your child gets from SALT to work on, we will be able to do it with your child whilst they are in school as well as them doing it at home with you.



Miss Hinton

- Miss Hinton is our school family support worker.
- She holds weekly stay and play sessions on a Friday at 2pm.
- She is a great support for families on a range of different things. (Sleep, behaviour, dummies etc.)
- She can meet with you if you wish and can be contacted via the office or on Class Dojo.
- She can make referrals with you to places such as the children's centre.

Toileting

- Toileting is a big thing for our preschool and nursery aged children.
- As a school we can work together with you to help toilet train your child.
- We have potties available for use as well as the toilets. If you want your child to bring in their personal potty from home that is absolutely fine.
- Toilet accidents are normal and children can regress with their toileting, when they are in a new environment and also, sometimes they are so busy choosing in the provision, they can forget.
- We do lots of reminders for going to the toilet and the children have access to the toilets all day. Whenever they need to use it.





THANK YOU FOR COMING!

- A huge thank you for coming to this meeting. As always if you have any questions, please speak to one of the EYFS team. I am available on Class Dojo, however, please consider I may not always respond immediately when outside working hours.
- Myself and the EYFS team cannot wait to work with you all to ensure the children are having the best start in life.